



## A Career as a Logger

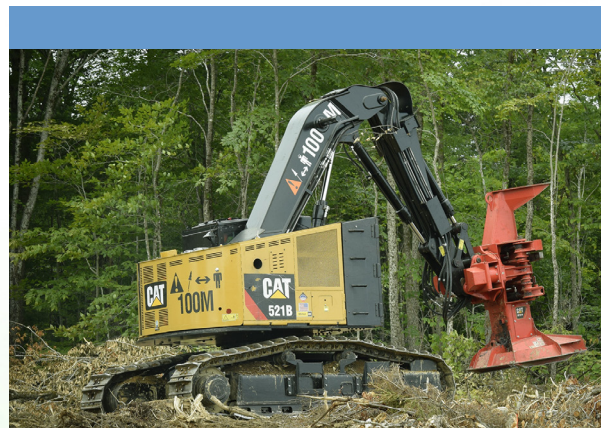
This training will give you a broad overview of the most common mechanical systems found in modern timber harvesting equipment and an understanding of the variables of timber growth, tree species, market flux and a strong emphasis on safety. Courses will be hands-on in a forest environment, operating the most current equipment in the industry, with dynamic classroom learning to help you become a professional in the logging industry.

## Career Opportunities Include:

- Delimber operator
- Grapple-skidder operator
- Feller-buncher operator
- Logging-equipment mechanic
- Forwarder operator
- Processor operator

"Along with replacing the aging work force, absolute numbers of wood harvesting related jobs are constantly shifting. In the short term and to a higher degree in the long-term, forest harvesting training programs will have a difficult time achieving a sufficient flow of candidates who will match the demand for labor and satisfy forest industry requirements. However, many believe that the need to develop and institutionalize such a training program is pressing because there is currently no such program in the State of Maine or the Northeast to provide relief for these identified forestry industry labor issues."

– *Changing Demand for Woodworkers in the Maine Forest, MDOL BLS Report of the Logging Industry Advisory Group to the Joint Standing Committee on Labor, Commerce, Research and Economic Development October 2012.*



R3/2018

For more information,  
or to register:  
**(207) 768-2768**  
**nmcc.edu**



# MECHANIZED LOGGING OPERATIONS



Eastern Maine  
Community College  
*Great College. Smart Choice.*

Technical  
Career &  
Transfer Education



**(207) 768-2768**

**nmcc.edu**





## 12-week session Beginning June 24, 2019

Monday - Friday

Location: Stratton, Maine

### Quality Training

This program was created by three Maine Community Colleges in partnership with the Professional Logging Contractors of Maine. The logging industry has many unfilled positions for quality operators who are skilled in modern equipment. This program is designed to get you started in a career as an equipment operator. We will teach you what it takes to be a well-trained equipment operator as part of a safe, production-oriented harvesting team.



### Training will focus on:

- Harvesting laws, environmental regulations and best practices pertaining to forestry, including shoreland zoning, Maine Forest Practices Act, boundary lines, basal area, and vernal pools.
- Information concerning the forest sector, including markets, utilization, equipment, logging techniques, etc.
- Basic maintenance and repair of equipment.
- Safe operation of a grapple skidder, feller buncher, stroke delimber, processor and forwarder.
- Industry-recognized safety certifications, demonstrating competence in required safety standards for logging operations.
- A cooperative team-vision approach in mechanical forest operations where three to five individuals must work together to accomplish the goal of producing forest products to roadside.

**FREE TO MAINE RESIDENTS**

## REQUIREMENTS

### For Admission

- Personal interview
- Valid Maine driver's license and a review of your driving record\*
- High School diploma or GED
- Immunization record/proof of: MMR or titer indicating immunity; Diphtheria/tetanus given in the past 10 years

*\*Driving record will be reviewed in order to meet eligibility requirements, as specified by employers. NOTE: Students will be required to provide their own personal protective clothing. Industry-specific protective gear, including work boots and gloves, will be provided by the program.*

*\*\*Next 12-week session will begin June 24, 2019 in Stratton, Maine*

*For complete admission requirements & screening details and to complete the online application, visit us online at [nmcc.edu](http://nmcc.edu)*

