



PROGRAM PURPOSE

NMCC's early childhood education program offers both a two-year associate degree and a one-year certificate-level option. The associate degree program is designed to educate childcare professionals in the skills and knowledge necessary for advanced positions in organizations and agencies that serve children. It provides courses and field experience in childcare, as well as well-rounded supporting education. It also provides transfer opportunities to work towards a bachelor's degree.

The certificate program provides the training needed for entry-level positions and meets the more immediate needs of those who do not choose the additional courses required for the degree. The core courses of this program align with the educational requirements for the State of Maine Child Development Assistant (CDA) credential.

Transfer Agreement with the University of Maine at Presque Isle (UMPI)

To provide a smooth transition for NMCC's associate of applied science early childhood education students, NMCC and UMPI have entered into an agreement which recognizes the compatibility of the curriculum. This agreement allows qualified graduates from NMCC's early childhood education program to be accepted into UMPI's bachelor of science in elementary education, early childhood education option.

CAREER OPPORTUNITIES

Graduates of this program will find employment opportunities in:

- Child care centers
- Nursery schools
- Public schools
- One-on-one aide positions
- Summer & day camps
- Preschool programs
- Recreational centers

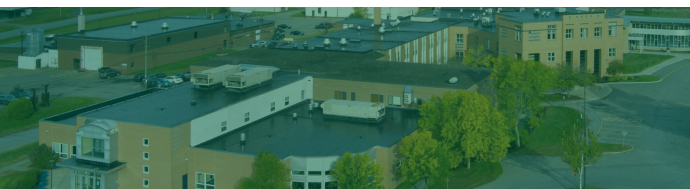


APPLICATION PROCEDURE

The following procedures constitute the admissions process:

- 1** Submit an NMCC application.

Submit official high school transcript and/or HiSET/GED scores (current senior's ranking period grades).
- 2**
- 3** Official college transcripts for applicants who have attended other post-secondary schools.
- 4** If SAT scores are not available, placement testing may be required.
- 5** Meet with an Admissions Counselor.
- 6** A campus tour is highly recommended.



GET IN TOUCH

207-768-2785

www.nmcc.edu
nmccadmissions@mainecc.edu

33 Edgemont Drive
Presque Isle, ME 04769

Early Childhood Education
2024-2025
Associate in Applied Science Degree Program

First Semester			C	L	CR
> ECE 101	(ECED 101)	Healthy Learning Environments	3	0	3
> ECE 105	(ECED 105)	Advanced Intellectual & Social Development	3	0	3
> ECE 192	(ECED 192)	Field Experience in Early Childhood Education I	0	9	3
PSY 101	(PSYC 100)	General Psychology	3	0	3
		Math Elective	3	0	3
			12	9	15
Second Semester			C	L	CR
> ECE 120	(ECED 120)	Programmatic & Professional Development	3	0	3
> ECE 196	(ECED 196)	Field Experience in Early Childhood Education II	1	9	4
> ECE 200	(ECED 200)	Child Growth & Development	3	0	3
> ECE 205	(ECED 205)	Children's Literature	3	0	3
ENG 111	(ENGL 101)	English Composition	3	0	3
			13	9	16
Third Semester			C	L	CR
BIO 115	(BIOL 124)	General Biology	3	2	4
CIS 113	(COMP 113)	Introduction to Microcomputer Applications	3	0	3
COM 111	(COMM 107)	Speech	3	0	3
> ECE 210	(ECED 210)	Child Guidance & Discipline	3	0	3
> ECE 230	(ECED 230)	Curriculum in Early Childhood Education (Birth-3)	3	0	3
			15	2	16
Fourth Semester			C	L	CR
> ECE 197	(ECED 197)	Field Experience in Early Childhood Education III	1	12	5
> ECE 220	(ECED 220)	Education of Young Children with Special Needs	3	0	3
> ECE 235	(ECED 235)	Curriculum in Early Childhood Education (Ages 3-8)	3	0	3
ENG 226	(ENGL 226)	Introduction to Literature	3	0	3
SOC 111	(SOCI 100)	Sociology	3	0	3
			13	12	17
Total Required					64

> Major courses; a minimum grade of "C" or 2.0 is required

Key: C=Class hours; L=Laboratory; CR=Credit hours

Early Childhood Education
2024-2025
Certificate Program

First Semester			C	L	CR
> ECE 101	(ECED 101)	Healthy Learning Environments	3	0	3
> ECE 105	(ECED 105)	Advanced Intellectual & Social Development	3	0	3
> ECE 192	(ECED 192)	Field Experience in Early Childhood Education I	0	9	3
PSY 101	(PSYC 100)	General Psychology	3	0	3
		Math Elective	3	0	3
			12	9	15
Second Semester			C	L	CR
CIS 113	(COMP 113)	Introduction to Microcomputer Applications	3	0	3
> ECE 120	(ECED 120)	Programmatic & Professional Development	3	0	3
> ECE 196	(ECED 196)	Field Experience in Early Childhood Education II	1	9	4
ENG 111	(ENGL 101)	English Composition	3	0	3
			10	9	13
Third Semester			C	L	CR
> ECE 197	(ECED 197)	Field Experience in Early Childhood Education III	1	12	5
Total Required					33

