

## PROGRAM PURPOSE

NMCC's automotive collision repair program is the only collegiate program offered in northern New England. It is designed to provide broad fundamental training in the repair of collision damage, frame straightening, and the replacement of body panels. Welding, cutting, and grinding, the use of plastic and fiberglass in preparation for the application of paint, and SMC panel and plastic parts repair are all included in the curriculum.

The second year of the program provides more emphasis on major collision appraisal and repair as well as the auto body refinishing process. Emphasis is also placed on base coat, clear coat and tri-coat paint and electronic color matching.

*The Automotive Collision Repair program has achieved Master Level certification by the National Institute for Automotive Excellence (ASE)*

## CAREER OPPORTUNITIES

Pursuing an education in automotive collision repair opens doors to a wide range of dynamic career opportunities. As a skilled professional in this field, you will be equipped to restore vehicles to their original condition, ensuring safety and aesthetics.

Graduates of the program will find job opportunities with:

- Auto body and paint shops
- Car dealers
- Auto glass shops and truck body builders

With experience, advanced positions may be available in:

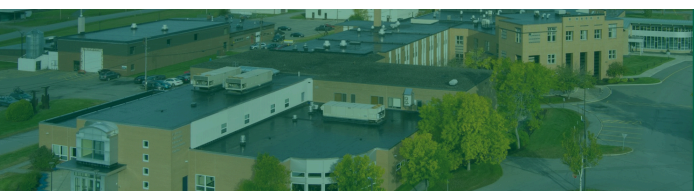
- Supervision
- Insurance adjusting
- Sales and service
- Self-employment
- Auto product field representation



## APPLICATION PROCEDURE

*The following procedures constitute the admissions process:*

- 1 Submit an NMCC application.  
  
Submit official high school transcript and/or HiSET/GED scores (current senior's ranking period grades).
- 2
- 3 Official college transcripts for applicants who have attended other post-secondary schools.
- 4 If SAT scores are not available, placement testing may be required.
- 5 Meet with an Admissions Counselor.
- 6 A campus tour is highly recommended.



## GET IN TOUCH

207-768-2785

[www.nmcc.edu](http://www.nmcc.edu)  
[nmccadmissions@mainecc.edu](mailto:nmccadmissions@mainecc.edu)

33 Edgemont Drive  
Presque Isle, ME 04769

## AUTOMOTIVE COLLISION REPAIR

2024-2025

Associate in Applied Science Degree Program

First Semester			C	L	CR
>	<b>ACR 111</b>	<b>(AUTC 111) Nonstructural Repairs</b>	<b>3</b>	<b>9</b>	<b>6</b>
	ENG 111	(ENGL 101) English Composition	3	0	3
	SAE 121	(OSHA 121) Industrial Safety	3	0	3
	WEI 113	(WELD 113) Thin Metals Welding	2	2	3
		Gen Ed Elective	3	0	3
			<b>14</b>	<b>11</b>	<b>18</b>

Second Semester			C	L	CR
>	<b>ACR 121</b>	<b>(AUTC 121) Structural Analysis/Plastics</b>	<b>3</b>	<b>9</b>	<b>6</b>
>	<b>AUT 115</b>	<b>(AUTO 115) Automotive Electricity</b>	<b>2</b>	<b>2</b>	<b>3</b>
	MAT 122	(MATH 130) Technical Mathematics	2	2	3
	WEI 135	(WELD 135) I-CAR Welding	2	2	3
		Social Science Elective	3	0	3
			<b>12</b>	<b>15</b>	<b>18</b>

Third Semester			C	L	CR
>	<b>ACR 209</b>	<b>(AUTC 209) Auto Collision Blueprint &amp; Estimating</b>	<b>3</b>	<b>0</b>	<b>3</b>
>	<b>ACR 211</b>	<b>(AUTC 211) Painting &amp; Refinishing</b>	<b>3</b>	<b>9</b>	<b>6</b>
>	<b>AUT 125</b>	<b>(AUTO 125) Automotive Electronics</b>	<b>2</b>	<b>2</b>	<b>3</b>
	PHY 150	(PHYS 110) Physics	3	2	4
		Humanities Elective	3	0	3
			<b>14</b>	<b>13</b>	<b>19</b>

Fourth Semester			C	L	CR
	ACR 214	(AUTC 214) Airbrushing Techniques	2	2	3
>	<b>ACR 223</b>	<b>(AUTC 223) Structural Repairs</b>	<b>3</b>	<b>9</b>	<b>6</b>
	AUT 216	(AUTO 216) Motor Vehicle Inspection	2	0	2
>	<b>AUT 229</b>	<b>(AUTO 229) Automotive Heating &amp; Air Conditioning</b>	<b>2</b>	<b>2</b>	<b>3</b>
	COM 221	(COMM 201) Technical Communications	3	0	3
			<b>12</b>	<b>13</b>	<b>17</b>

**Total Required** **72**

> **Major courses; a minimum grade of "C" or 2.0 is required**

**Key: C=Class hours; L=Laboratory; CR=Credit hours**



The Automotive Technology program has achieved Master Level certification by the National Institute for Automotive Excellence (ASE) after a thorough evaluation.

## AUTOMOTIVE COLLISION REPAIR

2024-2025

Certificate Program

First Semester			C	L	CR
>	<b>ACR 111</b>	<b>(AUTC 111) Nonstructural Repairs</b>	<b>3</b>	<b>9</b>	<b>6</b>
	ENG 111	(ENGL 101) English Composition	3	0	3
	SAE 121	(OSHA 121) Industrial Safety	3	0	3
	WEI 113	(WELD 113) Thin Metals Welding	2	2	3
			<b>11</b>	<b>11</b>	<b>15</b>

Second Semester			C	L	CR
>	<b>ACR 121</b>	<b>(AUTC 121) Structural Analysis/Plastics</b>	<b>3</b>	<b>9</b>	<b>6</b>
>	<b>AUT 115</b>	<b>(AUTO 115) Automotive Electricity</b>	<b>2</b>	<b>2</b>	<b>3</b>
	MAT 122	(MATH 130) Technical Mathematics	2	2	3
	WEI 135	(WELD 135) I-CAR Welding	2	2	3
			<b>9</b>	<b>15</b>	<b>15</b>

**Total Required** **30**

**Must have completed the Auto Collision Repair Certificate Program or have permission from the Instructor to enroll**

## MAJOR COLLISION REPAIR & REFINISHING

2024-2025

Certificate Program

First Semester			C	L	CR
>	<b>ACR 209</b>	<b>(AUTC 209) Auto Collision Blueprint &amp; Estimating</b>	<b>3</b>	<b>0</b>	<b>3</b>
>	<b>ACR 211</b>	<b>(AUTC 211) Painting &amp; Refinishing</b>	<b>3</b>	<b>9</b>	<b>6</b>
>	<b>AUT 125</b>	<b>(AUTO 125) Automotive Electronics</b>	<b>2</b>	<b>2</b>	<b>3</b>
	ENG 111	(ENGL 101) English Composition	3	0	3
			<b>11</b>	<b>11</b>	<b>15</b>

Second Semester			C	L	CR
>	<b>ACR 223</b>	<b>(AUTC 223) Structural Repairs</b>	<b>3</b>	<b>9</b>	<b>6</b>
	AUT 216	(AUTO 216) Motor Vehicle Inspection	2	0	2
>	<b>AUT 229</b>	<b>(AUTO 229) Automotive Heating &amp; Air Conditioning</b>	<b>2</b>	<b>2</b>	<b>3</b>
	MAT 122	(MATH 130) Technical Mathematics	2	2	3
			<b>9</b>	<b>13</b>	<b>14</b>

**Total Required** **29**