

PROGRAM PURPOSE

Designed for aspiring business leaders, our entrepreneurship certificate program prepares prospective entrepreneurs to launch new ventures by educating them in the fundamentals of starting and operating their businesses. You will gain hands-on experience, expert mentorship, and a robust curriculum to turn your innovative ideas into reality.

For entrepreneurs who already have established businesses, this program will help you strengthen your business and management skills. Benefit from small class sizes, personalized attention, and a supportive community that fosters creativity and resilience. Whether you're looking to start your own business or enhance your entrepreneurial skills, our program equips you with the knowledge and resources needed for success.

Graduates who want to expand their business management skills can continue their studies by completing the business administration associate degree program at NMCC. Students may be able to apply 25 of the 31 credits earned toward an associate degree in business administration. Join us and take the first step toward transforming your passion into a thriving enterprise.

CAREER OPPORTUNITIES

Entrepreneurship is a powerful employment strategy that can lead to economic self-sufficiency. By pursuing self-employment, individuals and their families gain the potential to create and manage their own businesses, taking on the role of employer or boss rather than just being employees.

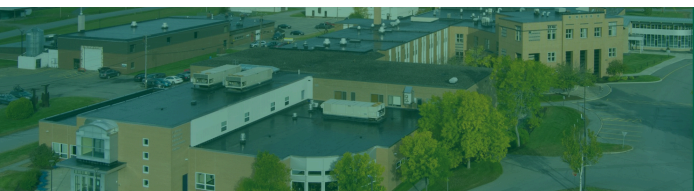
This path allows for greater control, flexibility, and the ability to directly impact your financial future and personal fulfillment.



APPLICATION PROCEDURE

The following procedures constitute the admissions process:

- 1 Submit an NMCC application.
- 2 Submit official high school transcript and/or HiSET/GED scores (current senior's ranking period grades).
- 3 Official college transcripts for applicants who have attended other post-secondary schools.
- 4 If SAT scores are not available, placement testing may be required.
- 5 Meet with an Admissions Counselor.
- 6 A campus tour is highly recommended.



GET IN TOUCH

207-768-2785

www.nmcc.edu
nmccadmissions@maineccc.edu

33 Edgemont Drive
Presque Isle, ME 04769

ENTREPRENEURSHIP

2025-2026 Curriculum

Certificate Program

First Semester			C	L	CR
	ACC 110	College Accounting (OR ACC 114 Principles of Accounting I)	3	0	3
>	BUS 101	Introduction to Business	3	0	3
	CIS 104	Introduction to Computer Concepts	1	0	1
>	CIS 113	Introduction to Microcomputer Applications	3	0	3
	ENG 111	English Composition	3	0	3
	MAT 115	Business Mathematics (or MAT 116 Quantitative Reasoning)	3	0	3
			16	0	16
Second Semester			C	L	CR
>	ACC 112	Computerized Accounting	3	0	3
	ACC 113	Payroll Accounting	3	0	3
>	BUS 109	Entrepreneurship	3	0	3
>	BUS 241	Principles of Marketing	3	0	3
	CIS 108	Spreadsheet Applications	3	0	3
			15	0	15
Total Required					31
>	Major courses; a minimum grade of "C" or 2.0 is required				
	Key: C=Class hours; L=Laboratory; CR=Credit hours				

