



## PROGRAM PURPOSE

NMCC's early childhood education program offers both a two-year associate degree and a one-year certificate-level option. The associate degree program is designed to educate childcare professionals in the skills and knowledge necessary for advanced positions in organizations and agencies that serve children. It provides courses and field experience in childcare, as well as well-rounded supporting education. It also provides transfer opportunities to work towards a bachelor's degree.

The certificate program provides the training needed for entry-level positions and meets the more immediate needs of those who do not choose the additional courses required for the degree. The core courses of this program align with the educational requirements for the State of Maine Child Development Assistant (CDA) credential.

### ***Transfer Agreement with the University of Maine at Presque Isle (UMPI)***

*To provide a smooth transition for NMCC's associate of applied science early childhood education students, NMCC and UMPI have entered into an agreement which recognizes the compatibility of the curriculum. This agreement allows qualified graduates from NMCC's early childhood education program to be accepted into UMPI's bachelor of science in elementary education, early childhood education option.*

## CAREER OPPORTUNITIES

Graduates of this program will find employment opportunities in:

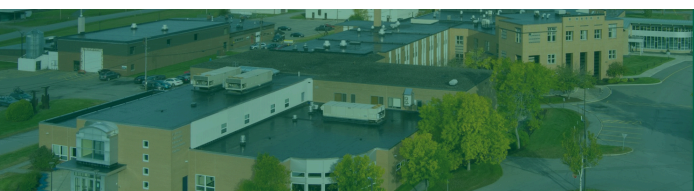
- Child care centers
- Nursery schools
- Public schools
- One-on-one aide positions
- Ed Tech Positions
- Summer & day camps
- Preschool programs
- Recreational centers



## APPLICATION PROCEDURE

***The following procedures constitute the admissions process:***

- 1** Submit an NMCC application.
- Submit official high school transcript and/or HiSET/GED scores (current senior's ranking period grades).
- 3** Official college transcripts for applicants who have attended other post-secondary schools.
- 4** If SAT scores are not available, placement testing may be required.
- 5** Meet with an Admissions Counselor.
- 6** A campus tour is highly recommended.



## GET IN TOUCH

207-768-2785

[www.nmcc.edu](http://www.nmcc.edu)  
[nmccadmissions@maineccc.edu](mailto:nmccadmissions@maineccc.edu)

33 Edgemont Drive  
Presque Isle, ME 04769

**Early Childhood Education**  
2025-2026  
Associate in Applied Science Degree Program

First Semester		C	L	CR
> ECE 101	Healthy Learning Environments	3	0	3
> ECE 105	Advanced Intellectual & Social Development	3	0	3
> ECE 193	Field Experience in Early Childhood Education I	1	6	3
PSY 101	General Psychology	3	0	3
	Math Elective	3	0	3
		<b>13</b>	<b>6</b>	<b>15</b>

Second Semester		C	L	CR
> ECE 120	Programmatic & Professional Development	3	0	3
> ECE 198	Field Experience in Early Childhood Education II	1	6	3
> ECE 200	Child Growth & Development	3	0	3
> ECE 205	Children's Literature	3	0	3
ENG 111	English Composition	3	0	3
		<b>13</b>	<b>6</b>	<b>15</b>

Third Semester		C	L	CR
> ECE 212	Child Guidance & Classroom Management	3	0	3
> ECE 236	Curriculum in Early Childhood Education (Birth-3)	3	0	3
BIO 115	General Biology	3	2	4
COM 111	Speech	3	0	3
ENG 227	Advanced Composition (OR COM 212 Business Communications)	3	0	3
		<b>15</b>	<b>2</b>	<b>16</b>

Fourth Semester		C	L	CR
> ECE 211	Field Experience in Early Childhood Education III	1	9	4
> ECE 220	Education of Young Children with Special Needs	3	0	3
> ECE 250	Science Methods for Early Childhood Education	3	0	3
> ENG 226	Introduction to Literature	3	0	3
SOC 111	Sociology	3	0	3
		<b>13</b>	<b>9</b>	<b>16</b>

**Total Required** **62**

> **Major courses; a minimum grade of "C" or 2.0 is required**

*Key: C=Class hours; L=Laboratory; CR=Credit hours*

**Early Childhood Education**  
2025-2026  
Certificate Program

First Semester		C	L	CR
> ECE 101	Healthy Learning Environments	3	0	3
> ECE 105	Advanced Intellectual & Social Development	3	0	3
> ECE 193	Field Experience in Early Childhood Education I	1	6	3
PSY 101	General Psychology	3	0	3
	Math Elective	3	0	3
		<b>12</b>	<b>6</b>	<b>15</b>

Second Semester		C	L	CR
> ECE 120	Programmatic & Professional Development	3	0	3
> ECE 198	Field Experience in Early Childhood Education II	1	6	3
> ECE 200	Child Growth & Development	3	0	3
> ECE 205	Children's Literature	3	0	3
ENG 111	English Composition	3	0	3
		<b>13</b>	<b>6</b>	<b>15</b>

**Total Required** **30**

